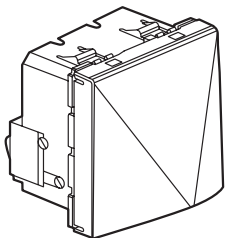
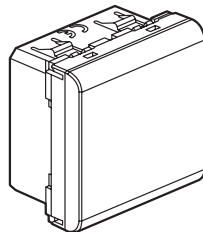


# Mosaic™ Cable outlets and branching device

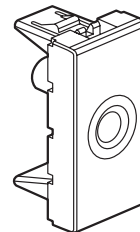
Cat. No(s): 0 775 50/51/52/53



0 775 51



0 775 53



0 775 52

## 1. GENERAL CHARACTERISTICS

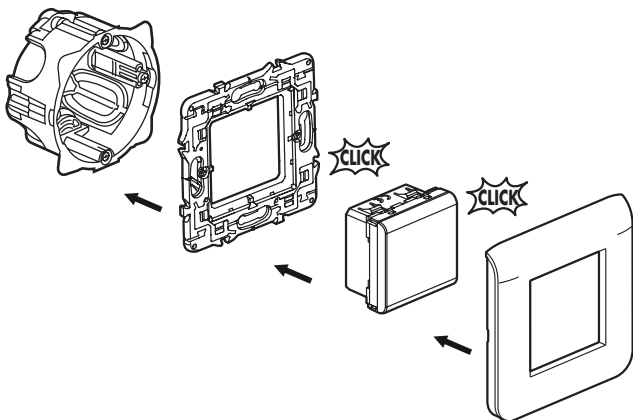
Cable outlets and wires for cables of different diameters.  
Branching device equipped with 3 terminals.

## 2. RANGE

	Designation	Cat. No.	No. of modules	Fixing method	Connection	Weight (g)	Characteristics
	Cable outlet	0 775 50	2	With clips	-	18.2	-
	Equipped cable outlet	0 775 51	2	With clips	Automatic	39.6	10 A - 250 V
	Wire outlet	0 775 52	1	With clips	-	8.7	-
	Branching device	0 775 53	2	With clips	With screws	38.62	20 A - 250 V

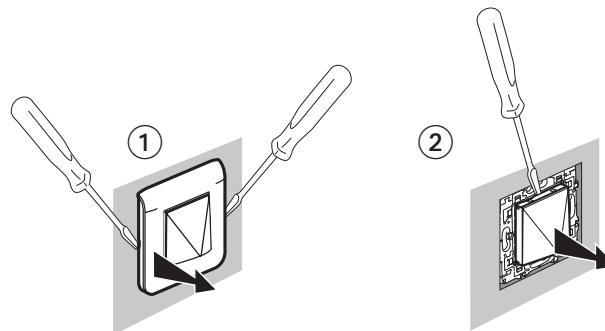
## 3. PREPARATION

The mechanisms can be flush-mounted or surface-mounted.  
Modular mechanisms using adapter Cat. No. 0 802 99 (2 modules).  
The mechanisms are mounted on thin walls using adapters  
Cat. No. 0 802 90 (1 module), Cat. No. 0 802 91 (2 modules),  
Cat. No. 0 802 92 (2 x 1 vertical module).



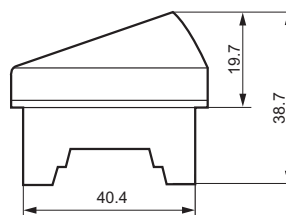
## 3. PREPARATION (continued)

Product dismounting for Cat. Nos. 0 775 50/51

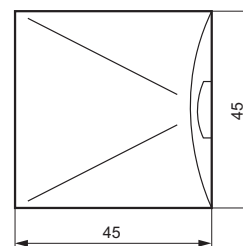
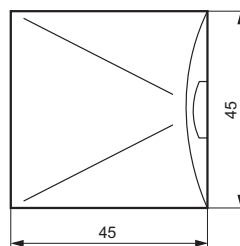
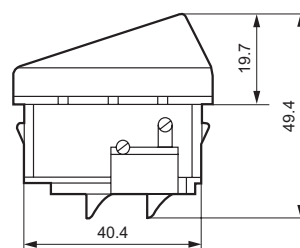


## 4. OVERALL DIMENSIONS

Cat. No. 0 775 50



Cat. No. 0 775 51

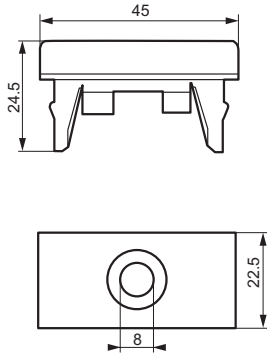


# Mosaic™ Cable outlets and branching device

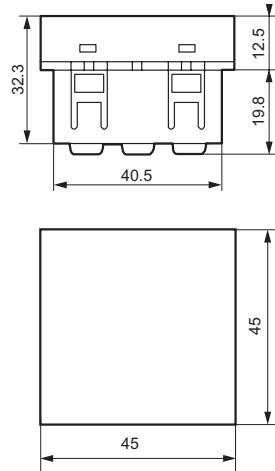
Cat. No(s): 0 775 50/51/52/53

## 4. OVERALL DIMENSIONS (continued)

Cat. No. 0 775 52



Cat. No. 0 775 53



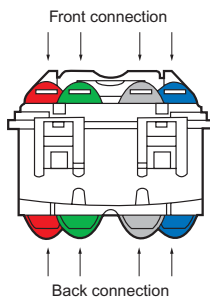
## 5. OPERATION

Cable outlets are equipped with cable clamps.  
Max. diameters of cables to be used: Cat. No. 0 775 50/51 : 12.5 mm  
Cat. No. 0 770 52: 8 mm

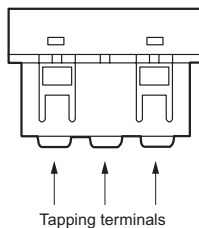
For Cat. No. 0 775 50: authorized cables - H05 VVF or H07 RNF with maximum diameter of 12.5 mm.

## 6. CONNECTION

**Cat. No. 0 775 51:**  
Type of connection: automatic  
Stripping length: 12 mm  
Cable cross-section: 4 x 2 x 1.5 mm<sup>2</sup>



**Cat. No. 0 775 53:**  
Type of connection: with screws  
Stripping length: 12 mm  
Cable cross-section: 6 x 2.5 mm<sup>2</sup>  
Type of screwdriver: Philips No. 1



## 7. TECHNICAL CHARACTERISTICS

### 7.1 Mechanical characteristics

Impact tests: IK 04  
Penetration by solid bodies/liquid: IP 41

### 7.2 Material characteristics

Base : Polycarbonate  
Cover plate : Polycarbonate (RAL 9003)

### 7.3 Electrical characteristics

Voltage : 250 V  
Cat. No. 775 51 : Current : 10 A  
Cat. No. 775 53 : Current : 20 A  
Self-extinguishing : 650°C / 30 s

### 7.4 Climatic characteristics

Storage temperatures : - 10°C to + 70°C  
Operating temperatures : - 5°C to + 50°C

## 8. CLEANING

Surface cleaning with a cloth.  
Do not use: acetone, tar remover, trichloroethylene.

### 8.1 Resistance to cleaning agents

Resistance to the following agents : Hexane (EN 60669-1), Methylated spirits, Soapy water, Diluted ammonia, Diluted pure bleach 10%, Glass cleaning substance, Pre-impregnated wipes.

### 8.2 Resistance to hospital-type cleaning agents

Resistance to the following agents: Anios, Surfanios, Bactilycine, Diluted hydrogen peroxide (35%).

### Caution:

A preliminary test should be carried out if other specific cleaning products are to be used.

## 9. CONFORMITY - APPROVALS

Approvals in process:  
Cat. No. 0 775 50: NF - CEBEC  
Cat. No. 0 775 51: NF