

## Niloé™ Strong points and innovative features of the range



**Catalogue number(s):** 6 643 01/35 - 6 645 03/41 - 6 646 41  
6 647 01/02/04/05/08/09/10/11/13/14/15/21/25/34/35/37/45/48/49  
6 647 50/51/56/63/66/68/75/77/81/86/87/88/89/91/93/95  
6 648 01/02/05/08/09/10/11/13/14/34/35/37/45/50/51/56/63  
6 648 66/68/75/77/81/87/91/93/95 - 6 650 00/01/02/03/09/10/11/12/13/96/99  
6 651 01/02/03/11/12/15/16/18/86/87/88/95/96 - 6 652 15/16/18/95



### ECO-DESIGN

- Reduction of CO<sub>2</sub> emissions by optimising the amounts of materials
- Reduction of laser-etched markings
- Reduction of packaging
- 100% recyclable site protective cover (APET)



### INNOVATIVE FUNCTIONS

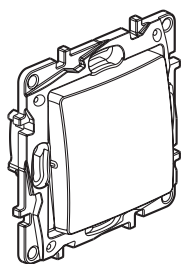
- ZigBee® radio functions
- Heating functions
- Airtight sleeve



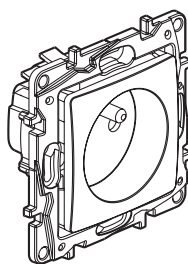
### EASY INSTALLATION

Niloé wiring accessories have been designed to save you time.

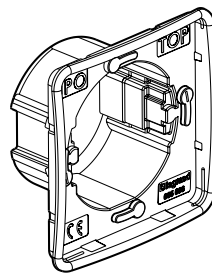
- Automatic terminals
- Prewired sockets
- Horizontal or vertical multi-gang mounting using the same plates



6 647 01



6 647 35



6 650 96



6 650 99

### 1. FEATURES OF THE SUPPORT

The mechanisms are supplied with cover plates and supports and a site protective cover.

- Support made of grey (RAL 737) halogen-free polycarbonate
- High impact resistance and torsional strength due to the thickness of the support



### 2. CONNECTIONS

- The control functions have automatic terminals, except for the roller blind/intermediate switch and 3-gang switch functions, which have screw terminals

- The socket functions have automatic terminals, except for the 2P - 16 A function

The automatic terminal release keys are grey (RAL 735).

Stripping length: 13 mm

Compatible with flexible or rigid cables.

Cable entries for the phase marked with red colour code



### 3. PLATES AND COVER PLATES

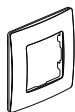
- Poly gloss appearance
- Colour: White (RAL 903) and Ivory (RAL 113)
- Material: - Plate ABS

- Rocker plate ABS
- Socket outlet cover plate polycarbonate
- Halogen-free

- Self-extinguishing: - 850°C/30 s for insulating parts holding live parts in place
- 650°C/30 s for other parts made of insulating materials

- Cover plate (and rocker plate) clipped onto the mechanisms

- Sealed range: IP 44 - IK 4 for socket outlet
- IK 7 for adaptor plate

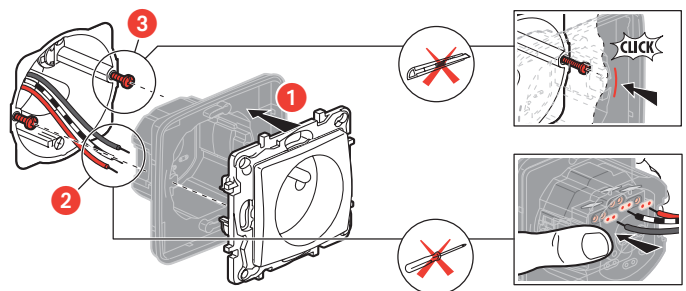


### 4. AIRTIGHT SLEEVE

**Cat. No. : 6 650 96**

Material: SEBS

Suitable for all standard mechanisms (except for the cable outlet).



### 5. SITE PROTECTIVE COVER

Material: APET, polyester-based plate, very clear, highly resistant to impacts and chemical agents.



### 6. "Rapido" CLAW

**Cat. No. : 6 650 99**

For fixing devices in refurbishment projects

