

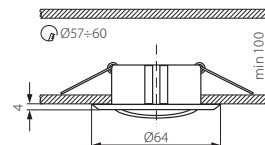
CEL CTC

Sufitowa oprawa punktowa / Ceiling lighting point fitting



CEL CTC-5519-C/M

- ▶ obudowa: odlew stopu aluminium
- ▶ casing: aluminum alloy cast



Kanlux



CEL CTC-5519-C/M

02755

matowy chrom / matt chrome

12V	max 35	MR-11	Gx4	↑	15 [°]	2x 0,75mm ²	12 cm	0,5 [m]	IP 20	House icon	III	1/-/100	90 [g]	CE
-----	--------	-------	-----	---	--------	------------------------	-------	---------	-------	------------	-----	---------	--------	----

PARLE CTC

Sufitowa oprawa punktowa / Ceiling lighting point fitting



PARLE CTC-5519-SN/G



PARLE CTC-5519-SN/N



PARLE CTC-5519-PS/G

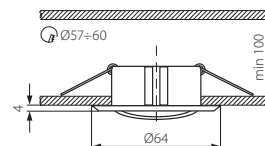


PARLE CTC-5519-PG/N



PARLE CTC-5519-MPC/N

- ▶ obudowa: odlew stopu aluminium
- ▶ casing: aluminum alloy cast



Kanlux



PARLE CTC-5519-SN/G
 PARLE CTC-5519-SN/N
 PARLE CTC-5519-PS/G
 PARLE CTC-5519-PG/N
 PARLE CTC-5519-MPC/N

02750
 02752
 02751
 02754
 02753

satynowy nikiel/złoty / satin nickel/gold
 satynowy nikiel/nikiel / satin nickel/nickel
 perłowo srebrny/złoty / pearl silver/gold
 perłowo złoty/nikiel / pearl gold/nickel
 matowo perłowy chrom/nikiel / matt pearl chrome/nickel

12V	max 35	MR-11	Gx4	↑	15 [°]	2x 0,75mm ²	12 cm	0,5 [m]	IP 20	House icon	III	1/-/100	86 [g]	CE
-----	--------	-------	-----	---	--------	------------------------	-------	---------	-------	------------	-----	---------	--------	----