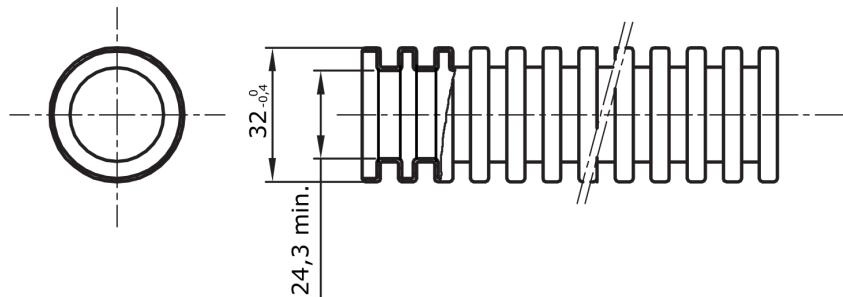


Pliable protected conduit system range FK15 , made in PVC: classification 3321, available in seven diameter, from 16 to 63 mm, in versions with or without cable puller and in six different colour to allow the identification of the various electrical lines. Suitable for electrical system and/or data trasmission for installation: mainly flush-mounting in floors, walls and/or ceiling and also inside false ceilings and floating floors.

<b>Colour</b>	Black	<b>Material</b>	PVC
<b>Type</b>	without cable puller	<b>Conduits Ø (mm)</b>	32
<b>Glow Wire Test</b>	960 °C	<b>Electrocod</b>	2112
<b>Insulation resistance</b>	100 M a 500V for 1 minute	<b>Resistance to impact</b>	3 (Medium - 2 J)
<b>Resistance to compression</b>	3 (Medium - 750 N)	<b>Resistance to bending</b>	2 (Pliable)
<b>Electrical characteristics</b>	2 (With electrical insulating characteristics)	<b>Protection against ingress of solid objects without accessories</b>	0
<b>Protection against ingress of solid objects with GF coupling</b>	4	<b>Protection against ingress of water</b>	0
<b>Resistance against corrosion</b>	PVC naturally resistant to corrosion	<b>Resistance to flame propagation</b>	1 (Non-flame propagating)
<b>Dielectric rigidity</b>	2000 V a 50 Hz for 15 minutes	<b>Standard</b>	EN 61386-1 EN 61386-22
<b>Lower temperature range</b>	2 (-5 °C)	<b>Upper temperature range</b>	1 (+60 °C)
<b>Classification</b>	3321		

### DIMENSIONAL



### TECHNICAL SYMBOLOGY



### STANDARDS/APPROVALS

