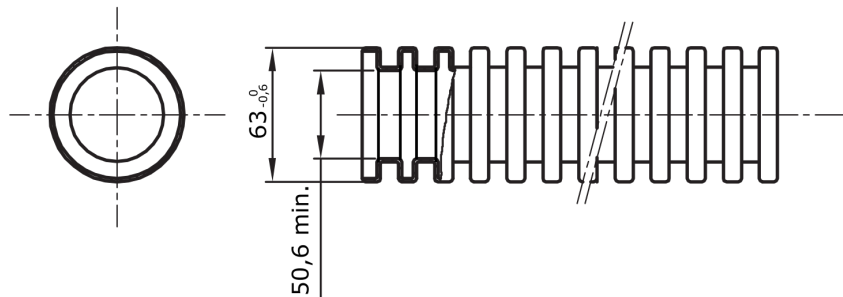




Pliable protected conduit system range FK15 , made in PVC: classification 3321, available in seven diameter, from 16 to 63 mm, in versions with or without cable puller and in six different colour to allow the identification of the various electrical lines. Suitable for electrical system and/or data trasmission for installation: mainly flush-mounting in floors, walls and/or ceiling and also inside false ceilings and floating floors.

Colour	Black	Material	PVC
Type	with cable puller	Conduits Ø (mm)	63
Glow Wire Test	960 °C	Electrocod	2112
Insulation resistance	100 M a 500V for 1 minute	Resistance to impact	3 (Medium - 2 J)
Resistance to compression	3 (Medium - 750 N)	Resistance to bending	2 (Pliable)
Electrical characteristics	2 (With electrical insulating characteristics)	Protection against ingress of solid objects without accessories	0
Protection against ingress of solid objects with GF coupling	4	Protection against ingress of water	0
Resistance against corrosion	PVC naturally resistant to corrosion	Resistance to flame propagation	1 (Non-flame propagating)
Dielectric rigidity	2000 V a 50 Hz for 15 minutes	Standard	EN 61386-1 EN 61386-22
Lower temperature range	2 (-5 °C)	Upper temperature range	1 (+60 °C)
Classification	3321		

DIMENSIONAL



TECHNICAL SYMBOLOGY



STANDARDS/APPROVALS

