

**RAGO DL-R50E**

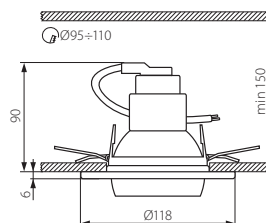
Sufitowa oprawa punktowa / Ceiling lighting point fitting



RAGO DL-R50E-C



RAGO DL-R50E-C/M



- ▶ obudowa: blacha stalowa
- ▶ casing: steel sheet

<b>Kanlux</b>		
RAGO DL-R50E-C	01078	chrom / chrome
RAGO DL-R50E-C/M	01077	matowy chrom / matt chrome

220-240V~	50/60Hz	max 60	R50	E14		15	2x0,75mm <sup>2</sup>	0,5	IP 20			1-/20	250	CE
-----------	---------	--------	-----	-----	--	----	-----------------------	-----	-------	--	--	-------	-----	----

**VABI DL**

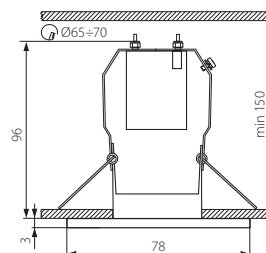
Sufitowa oprawa punktowa / Ceiling lighting point fitting



VABI DL-RS50-C



VABI DL-RS50-C/M



- ▶ obudowa: blacha stalowa
- ▶ casing: steel sheet

<b>Kanlux</b>		
VABI DL-RS50-C	04930	chrom / chrome
VABI DL-RS50-C/M	04931	matowy chrom / matt chrome

220-240V~	50/60Hz	max 60	R50	E14			3 x 1,5	0,5	IP 20			1/4/80	110	CE
-----------	---------	--------	-----	-----	--	--	---------	-----	-------	--	--	--------	-----	----