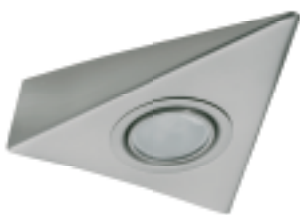
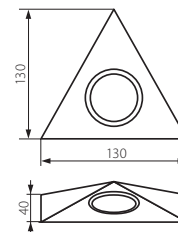


ZEPO POWER LED

Podszafkowa oprawa punktowa POWER LED / Under-cupboard lighting point POWER LED fitting



ZEPO POWER LED-C/M



- ▶ obudowa: blacha stalowa / osłona: szkło
- ▶ casing: steel sheet / enclosure: glass

Kanlux			
ZEPO POWER LED-C/M		08670	matowy chrom / matt chrome

do prawidłowego działania wymagany zasilacz elektroniczny o prądzie stałym 350mA, np. ADI 350 lub RICO dostępny w ofercie Kanlux
 electric power supply with direct current 350mA is needed for proper functioning, e.g. ADI 350 or RICO available in the Kanlux product range

ZEPO LFD

Podszafkowa oprawa punktowa / Under-cupboard lighting point fitting



ZEPO LFD-T02-C



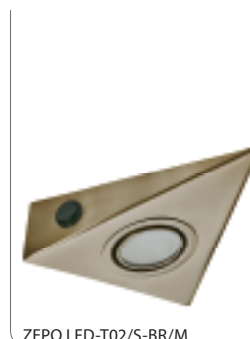
ZEPO LFD-T02-C/M



ZEPO LFD-T02/S-C

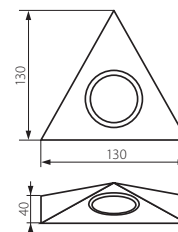


ZEPO LFD-T02/S-C/M



ZEPO LFD-T02/S-BR/M

- ▶ obudowa: blacha stalowa / osłona: szkło
- ▶ casing: steel sheet / enclosure: glass



Kanlux				
ZEPO LFD-T02-C		04380	chrom / chrome	128
ZEPO LFD-T02-C/M		04381	matowy chrom / matt chrome	128
ZEPO LFD-T02/S-C		04385	chrom / chrome	140
ZEPO LFD-T02/S-C/M		04386	matowy chrom / matt chrome	140
ZEPO LFD-T02/S-BR/M		04389	matowy mosiądz / matt brass	140

oprawa ZEPO LFD-T02/S-C, ZEPO LFD-T02/S-C/M, ZEPO LFD-T02/S-BR/M wyposażona we włącznik
 lighting fitting of ZEPO LFD-T02/S-C, ZEPO LFD-T02/S-C/M, ZEPO LFD-T02/S-BR/M equipped with a switch